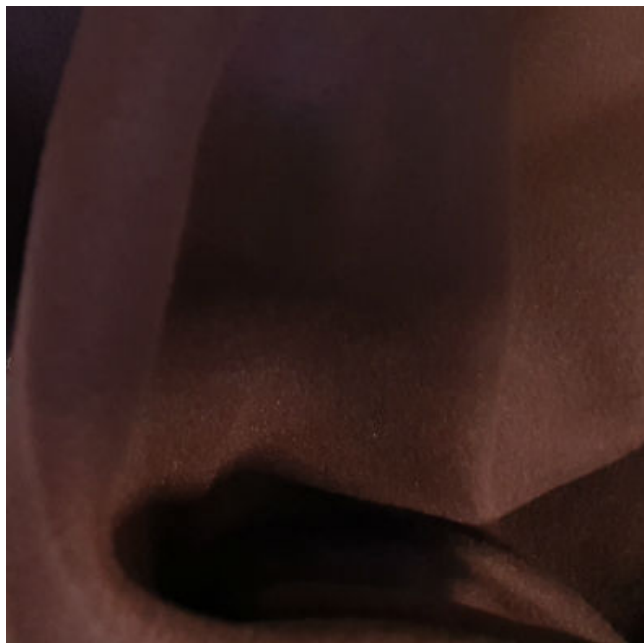




Micro Fleece Fabric



Available Colours:



Chocolate



Sky



Wine



Grey



Purple



Ivory



Royal



Gold



Black

Product code: KBT9842-U25-1-3
Selected Colour: **Chocolate**
Width: 150cm
Price: £6.99/mtr

Description:

Winter fleece fabrics are a popular choice for a wide range of items due to their soft and cosy feel. One type of fleece fabric is micro fleece, which is known for its warmth and lightweight properties. This makes it ideal for a variety of items such as apparel, clothing, athletic wear, throws, blankets, hoodies, hats, scarves, sweat shirts, jackets, outdoor clothing, baby blankets, sofa throws, pet clothing, pet bedding, and toys.

- Micro Fleece Fabric,
- 100% Polyester
- Fabric Width: 150cm
- Machine washable at 30c

Micro fleece fabric is made by bonding polyester fibres together, which creates a fabric that is both warm and lightweight. This makes it a great choice for items that need to be worn or used in cold weather, as it will help to keep the wearer or user warm without adding extra bulk or weight.

Another advantage of micro fleece fabric is its durability. It is resistant to pilling and has good abrasion resistance, making it a good choice for items that will be frequently used or washed. Additionally, it dries quickly and is easy to care for, making it a convenient choice for everyday use.

In terms of apparel, micro fleece fabric is popular in making jackets, hoodies, and sweaters. It is also used to make outdoor clothing like gloves, hats, and scarves, as well as athletic wear like sweat shirts and pants. Micro fleece fabric is also great for making blankets, throws, and baby blankets. The fabric is also

great for pet clothing, pet bedding and pet toys.

Overall, winter fleece fabrics like micro fleece are a popular choice due to their soft and cosy feel, warmth, and durability. They are ideal for a wide range of items, making them a versatile choice for cold weather gear.

Limited stock request fabric samples to check on its quality and its soft feel