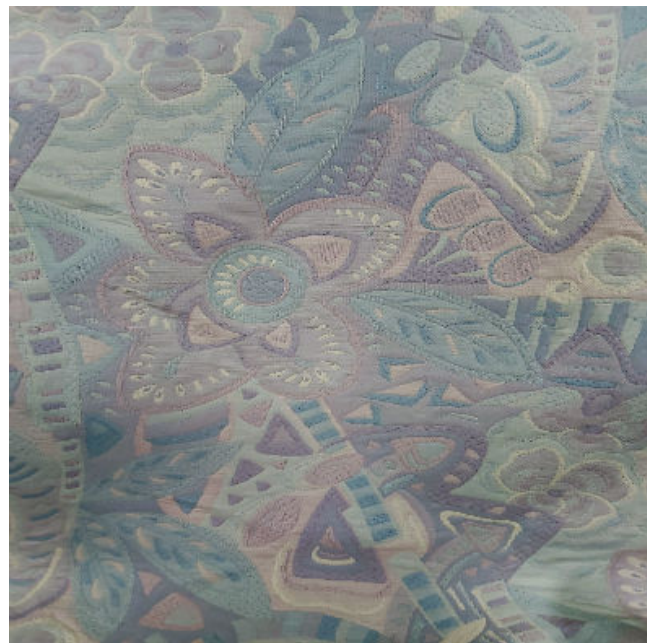




Padded Pastel Flower Upholstery Fabric



Available Colours:



Lilac and Mint

Product code: KBT9884-WH-U29
Selected Colour: **Lilac and Mint**
Width: 150 cm
Price: £16.99/mtr

Description:

Heavy weight upholstery fabric created in a way that almost feels like its quilted. There is a layer of brushed out yarn in between the top and bottom layer of the fabric. Its this that gives the top layer just enough padding so parts of the design stand out, very slightly.

The polyester yarn used for the colours is woven either with cream or with other shades to give definition and shading. The colour palate uses a group of shades that are very close. The pale and subtle shades of muted violet, lilac, mint, dusky pink, oat and teal all complement each other beautifully. The cooler mint shades stand out just enough against the purple shades, so the shapes can be easily defined. The design uses a simple line drawing and block style to create the display of large flowers and leaves, closely surrounded by abstract shapes with soft curves.

Overall this is an extremely high quality fabric that would work as a visual centre piece in a light and airy interior design. Make one large statement, like a big comfy sofa or use the fabric for oversize cushions to add colour and pattern to plain room.

- Quilted look upholstery
- Fun flower design
- Pastel flower fabric

- High quality upholstery
- Padded pattern upholstery
- Polyester upholstery
- Sofas, armchairs ottomans